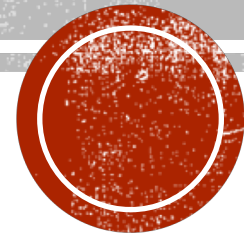


CORNERSTONE CLINIC

The Cariboo Cornerstone Cowboys

Serving Williams Lake, Quesnel and 100 Mile



WHO ARE WE?

BOOST Team:

Dr. Chris Kriek

Erin Prest

Ali Vrzal

Jane Barnett

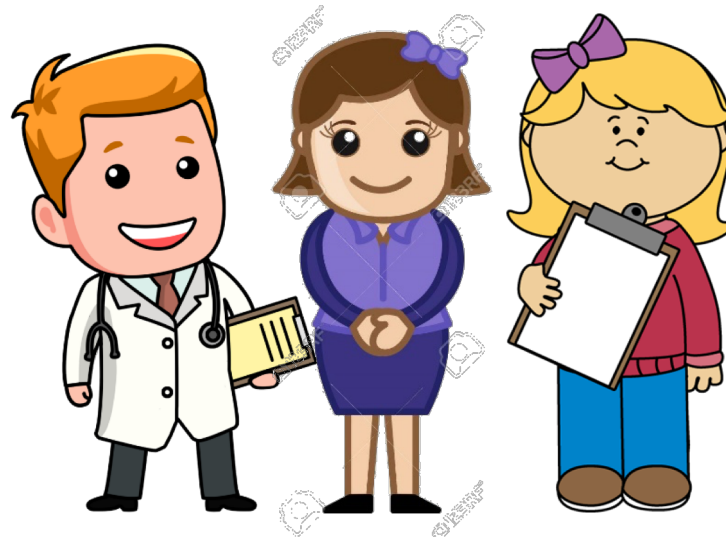
Additional Cornerstone Staff:

Dr. Ivan Scrooby

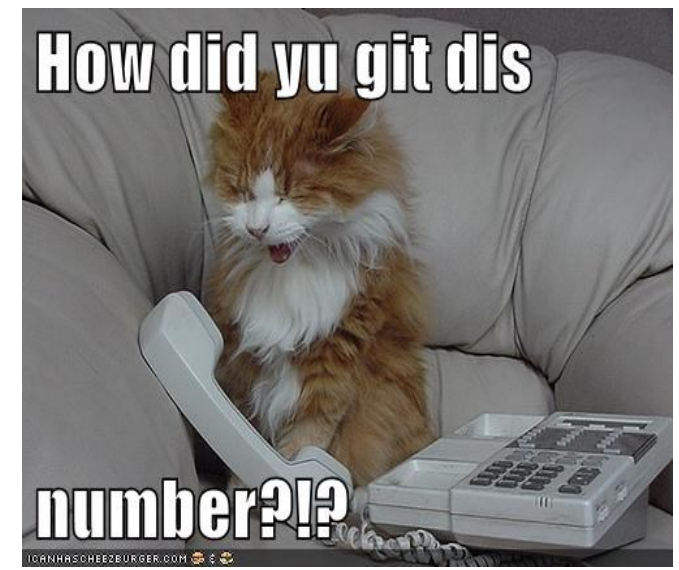
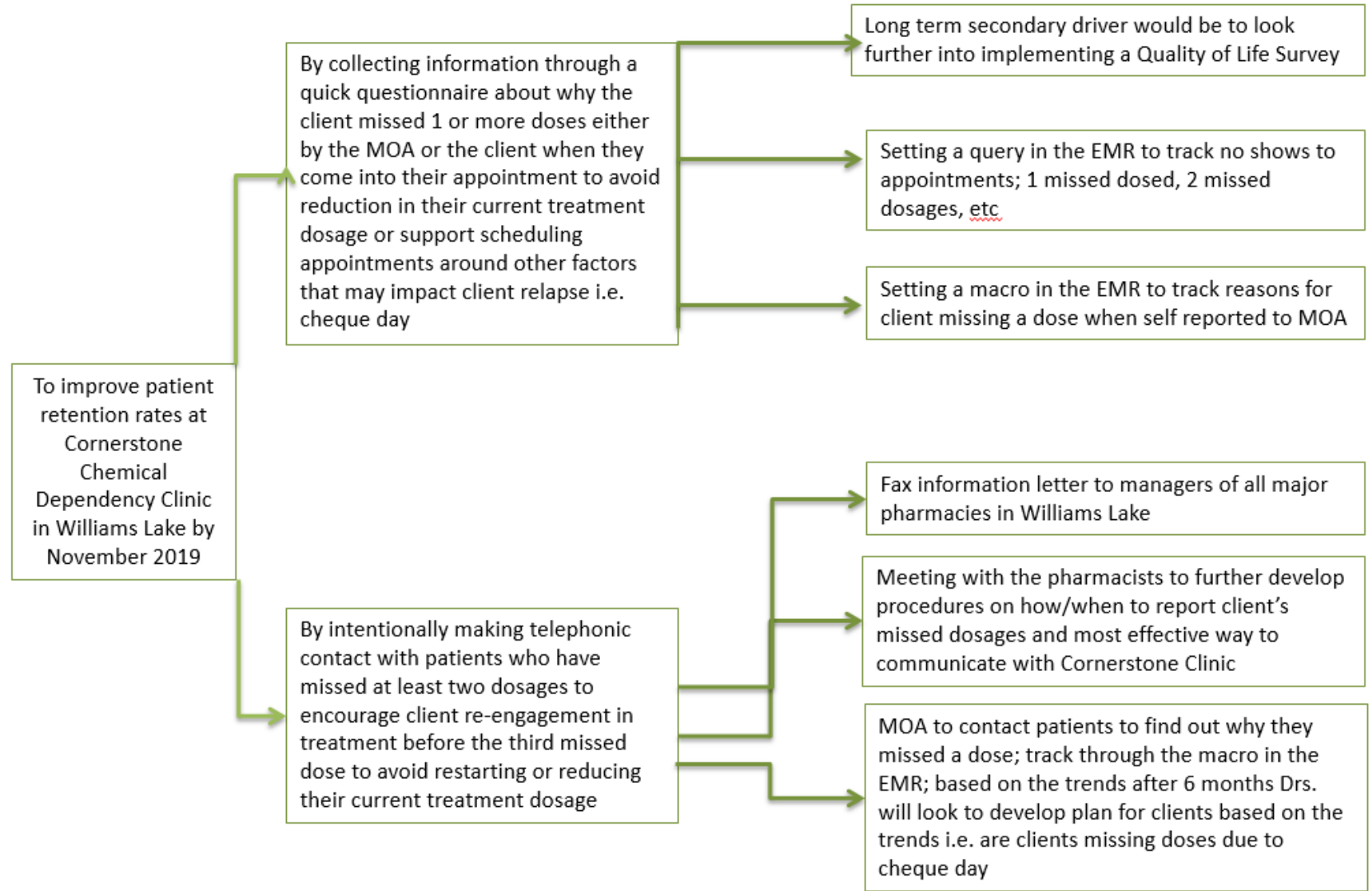
Dr. Roland Englebrecht

Chrys Mills

Frances Rutherford



AIM STATEMENT #1 :TO IMPROVE PATIENT RETENTION RATES AT CORNERSTONE CHEMICAL DEPENDENCY CLINIC IN WILLIAMS LAKE BY NOVEMBER 2019



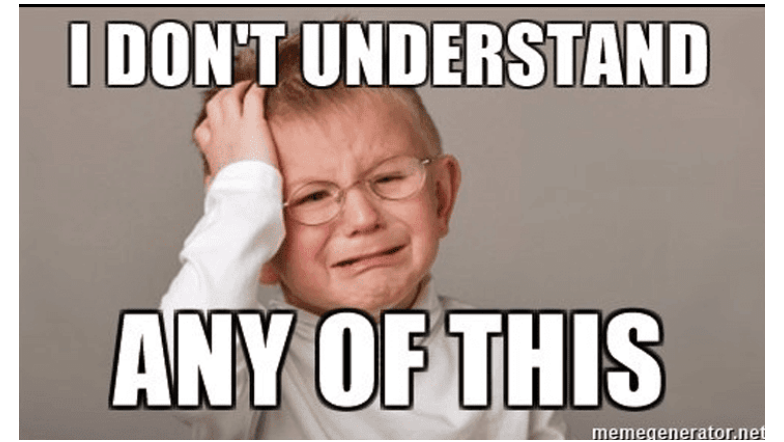
PDSA

(THE GOOD, THE BAD, THE UGLY)

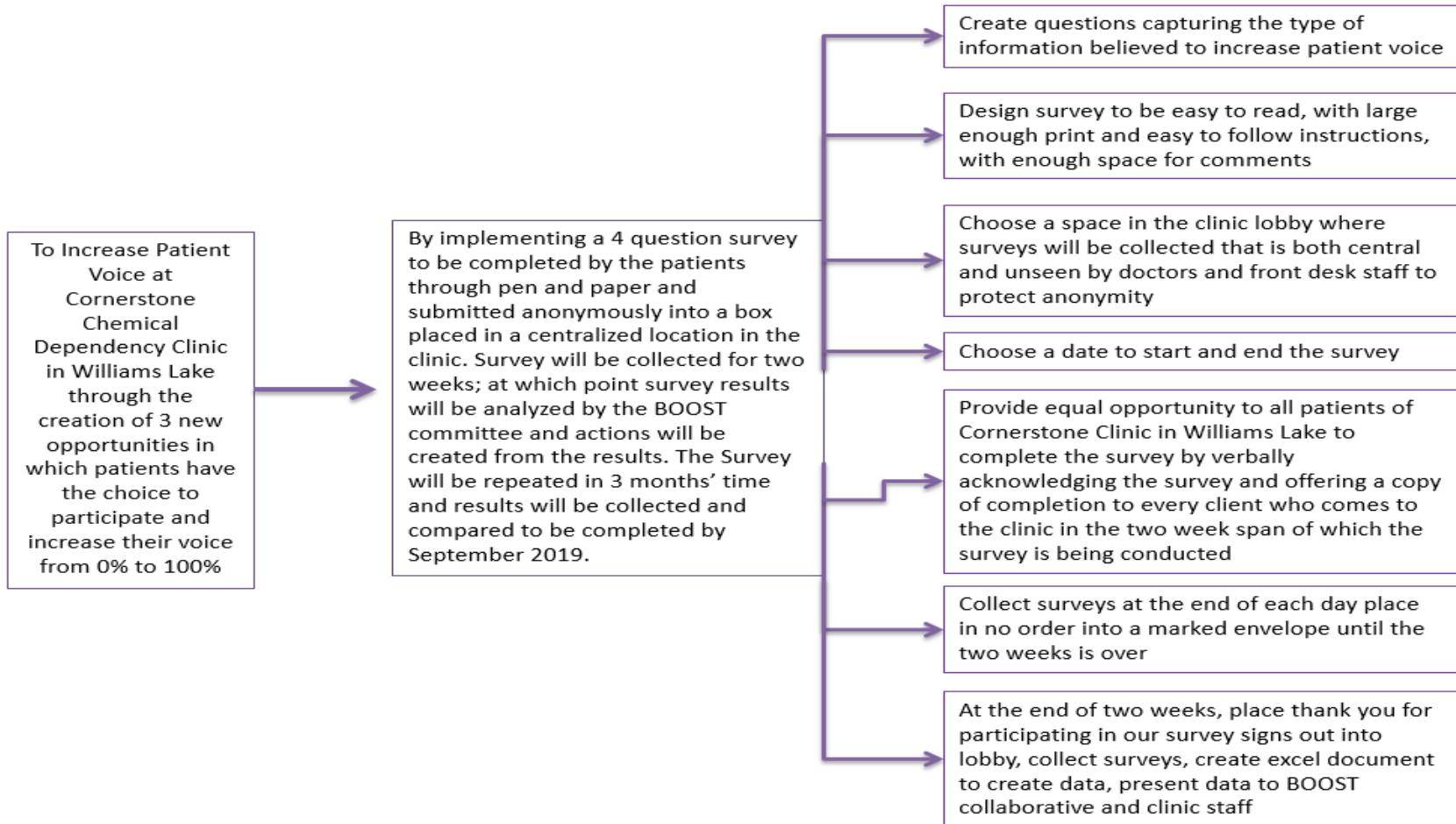
Our great intention: Increase patient retention

Our great challenge: Thinking it would be easy

Our great oversight: So many Numbers...



AIM STATEMENT #2 : TO INCREASE PATIENT VOICE AT CORNERSTONE CHEMICAL DEPENDENCY CLINIC IN WILLIAMS LAKE THROUGH THE CREATION OF 3 NEW OPPORTUNITIES IN WHICH PATIENTS HAVE THE CHOICE TO PARTICIPATE AND INCREASE THEIR VOICE FROM 0% TO 100%



PDSA

(THE GOOD, THE BAD, THE SAD)

Our great intention: Increase patient voice

Our great challenge: No one wanted to talk

Our great disappointment: Ali sat alone in the conference room



POF

For the purpose of BOOST we limited our Population of Focus to clients who access and are registered to our physical clinic location in Williams Lake.

Males: 56

Females: 36

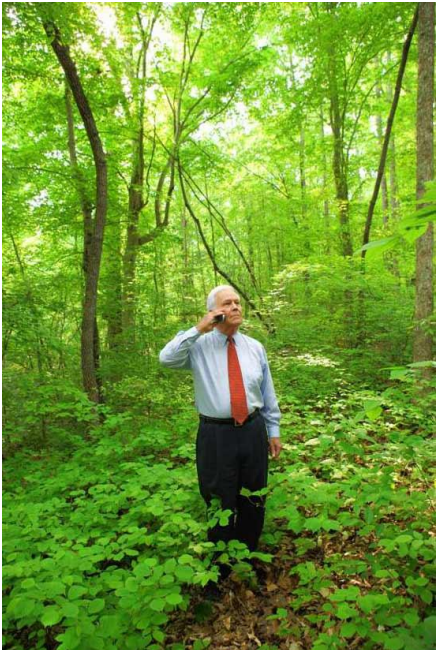
Total Humans: 92



CHALLENGES IN THE WILD WEST

At the Williams Lake Cornerstone Clinic:

- Large geographic area, we have clients travelling long distances to reach the clinic including 45kms North from Mcleese Lake; 66kms East from Horsefly; 17kms South from 150 Mile House
- Communication: Telephone/WIFI is limited in rural areas
- Limited Travel: Travel is limited to the days the medical bus service or family members are travelling into town
- Nomadic Lifestyle: Spending half their time in town half time and the other half on reserve
- Limited Access to Medical Care: Limited GPs in Williams Lake and only a visiting Psychiatrist
- Confidentiality: Clients struggle to connect with group therapy as everyone knows each



BUT WE PERSEVERE

- Updating our initial and yearly intake form
- Missed Dose Protocols
- Welcome Package
- Utilizing Profile More
- Recruitment for 100 Mile Doctor
- Working with Quesnel Mental Health Office
- Partnering with FNHA/Band Health Offices



BLAZING THE TRAIL

Continue on with BOOST PDSAs and setting out to fulfill our AIMS

AS WELL

We have been approved to continue our journey in Physician Quality Improvement through Interior Health's Quality Improvement Project



THANK YOU TO THE BOOST COLLABORATIVE

