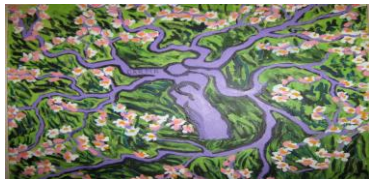


Three Bridges with HIM STOP HIV/AIDS Structured Learning Collaborative Storyboard



Three Bridges PCC - Program Description



- We are an inner city multi-disciplinary primary care team who provides health care to people with complex health care needs and/or physical, social, or economic barriers to accessing traditional primary health care services, such as people who are homeless, have addictions, lack health care coverage, are GLBT, or have chronic diseases such as HIV or Hep C.

Three Bridges with HIM STOP Team Description



We are –

- Lizzy Ambler - Manager, Pine Clinic, Three Bridges Primary Care Clinic & ICY Program – Senior Leader
- Brant Amos - Clinical Coordinator-Senior Clinical Champion
- Todd Sakakibara – Physician – Clinical Expert
- Christine Gillespie – RN – Day to Day Leader
- Jim Thorsteinson- Physician
- Donna Nicholson – Nurse Practitioner
- Hans Bosgoed – Clinical Manager, Health Initiative for Men (HIM) - Three Bridge Project Partner

Our Aim Statement

- Our aim is to increase the identification of clients with HIV and improve the health of all our HIV+ clients by ensuring they receive up to date best practice in HIV care. We will do this by implementing changes based on the expanded CCM in areas such as training, testing, and monitoring and through connecting with community partners.
- We will gauge our success by measuring the following:
 - 95% of HIV+ clients of the 2 team physicians will have at least one of the recommended screening tests and immunizations within the next 4 months, with plans to extend to all HIV+ clients by the end of 2011 (starting with TB & pneumo)
 - 95% of HIV+ clients on ARVs will have had a primary care visit in the next 4 months expanding to 95% of all HIV+ clients having a primary care visit at least every 4 months
 - 90% of all Methadone clients of the 2 team physicians will be offered an HIV test in the next 4 months with spread to 90% all clinic clients once tracking options in EMR become available including offering seamless care for all newly diagnosed HIV+ clients
 - 90% of HIV+ clients of the clinic lost to care will be identified, re-engaged in care or referred to STOP outreach within 6 months



Our Population of Focus

- Our entire population of focus is 5,300 current clients of the clinic of which approx. 100 are HIV+
- Our initial population of focus will be the clients of Dr. Sakakibara & Dr. Thorsteinson, of which approx. 35 are HIV +



Baseline Data that we have so Far



- There are approx. 100 HIV+ clients of practitioners at Three Bridges
- We are working to solidify our baseline numbers and identifying any HIV+ clients lost to care
- We are developing a data base of which HIV+ clients are on ARVs

Description of Progress & Partnerships so Far...

- We are working with HIM, our community partner to identify next steps in fulfilling our Aim Statement

